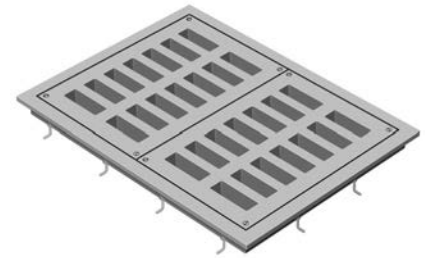
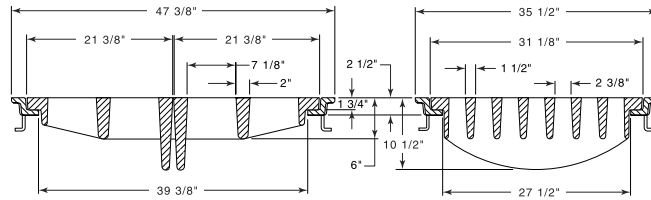


■ Note: When specifying/ordering grates, refer to "Choosing the Proper Inlet Grate" on pages 125-126.  
 For a complete listing of FREE OPEN AREAS and WEIR PERIMETERS of all NEENAH grates, refer to pages 327-332.

**R-3477-A**  
**Airport Drainage Inlet Frame, Double Grate**

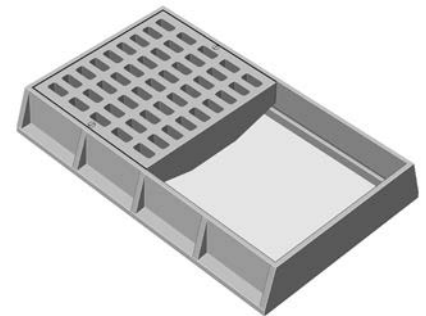
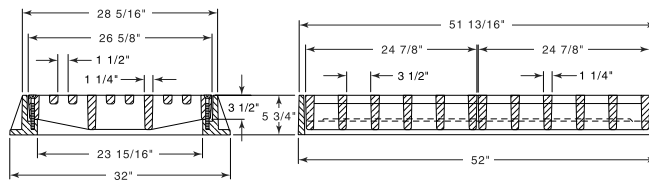


Grates are bolted to frames.

CATALOG NUMBER	GRATE TYPE	SQ. FT. OPEN	WEIR PERIMETER LINEAL FEET
R-3477-A	C	3.3	12.3

Anchors 12" on center.

**R-3480**  
**Airport Drainage Inlet Frame, Double Grate**

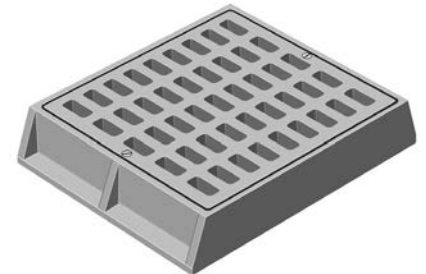
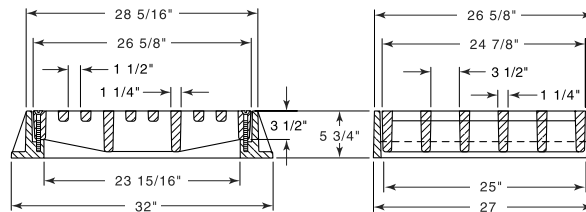


Grates are bolted to frames.

CATALOG NUMBER	GRATE TYPE	SQ. FT. OPEN	WEIR PERIMETER LINEAL FEET
R-3480	C	3.3	12.7

Available with solid Type C cover upon request.

**R-3480-A**  
**Airport Drainage Inlet Frame, Single Grate**

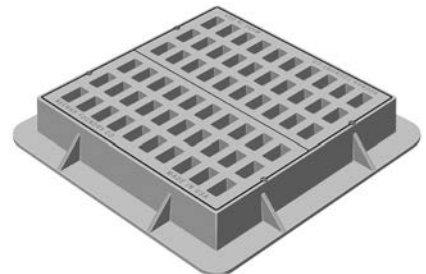
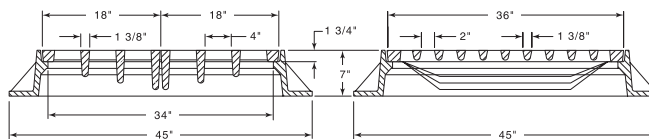


Grates are bolted to frames.

CATALOG NUMBER	GRATE TYPE	SQ. FT. OPEN	WEIR PERIMETER LINEAL FEET
R-3480-A	A	1.6	8.5

Available with solid Type C cover upon request.

**R-3481**  
**Airport Inlet, Double Grate**



Grates are bolted to frames.

CATALOG NUMBER	GRATE TYPE	SQ. FT. OPEN	WEIR PERIMETER LINEAL FEET
R-3481	C	3.3	12

Grate furnished in Ductile Iron.

Supplied By:



877-903-7246

www.trenchdrainsupply.com